



Dear Collectors,

Let me introduce you a small selection of Chinese snuff bottles I especially selected to celebrate the New Year.

I hope you will enjoy this small catalog,

All the best,

Laurence Souksi



Happy New Year of the Rooster !



N° 1 - A pear shaped porcelain snuff bottle decorated in bright enamels with five cockerels in various attitudes, a butterfly, a bat and a beetle among plants and flowers.

1820-1880

H : 7,5 cm



N° 2 - A light green glass snuff bottle carved through the translucent green overlay with a
« chîlong » on each side. Ring handles on the shoulders.

1780-1850

H : 5,5 cm

Provenance : Vente Millon et Jutheau - 2/04/1983 - lot n° 96 illustré



N° 3 - A molded and enameled porcelain "double-fish" snuff bottle decorated in iron-red enamel, the eyes in black and green bright enamels.

1800-1860

H: 7,5 cm



N° 4 - A porcelain snuff bottle of flattened rounded form painted in polychrome enamels with a battle scene on one side; the reverse with a trial scene, set in an open courtyard, illustrating the subjugation of the Qing dissident, Zhang Ge'er. The shoulders moulded with mask-and-ring handles. The base enamelled in regular script with the mark "Yongle tang" (hall of Eternal happiness).
Daoguang Period, 1821-1850

H: 6 cm

Provenance : "Collection du Commandeur" Paris



N° 5 - A glass snuff bottle, off flattened pear shape, the opaque white ground overlaid in red with a continuous scene of squirrels clambering among grapes.

China, 1780-1850

Ht : 7,7cm

Provenance : The white orchid Collection

Vente Me Boïsgirard - Drouot - 19/01/1977 - N° 73



N° 6 - A soft paste blue and creamy-white porcelain snuff bottle of rounded shape painted on a panel with Zhong Kui on his horse escorted by two little demons, one holding a "dais"; the reverse with three demons, one holding a vase with flowers and the others a big jar. The shoulders decorated with a peach and Buddhist symbols. Three bats on the neck and a nice four-character Yongzheng mark on the base.
1800-1850 H: 6,6 cm



N° 7 - A porcelain snuff bottle decorated in polychrome enamels with a continuous scene of geese, in flight, calling, feeding and resting amidst rushes on a grassy bank.
The base with a two-character inscription "Jade Trinket".
Second part of the 19th century
H: 8,8 cm



N° 8 - A single red overlay snuff bottle on opaque white glass, of rounded form, two plum trees embrace the whole of the bottle's body with theirs blossoming boughs.

China, 1750-1820

H : 6 cm

Provenance : The White Orchid Collection

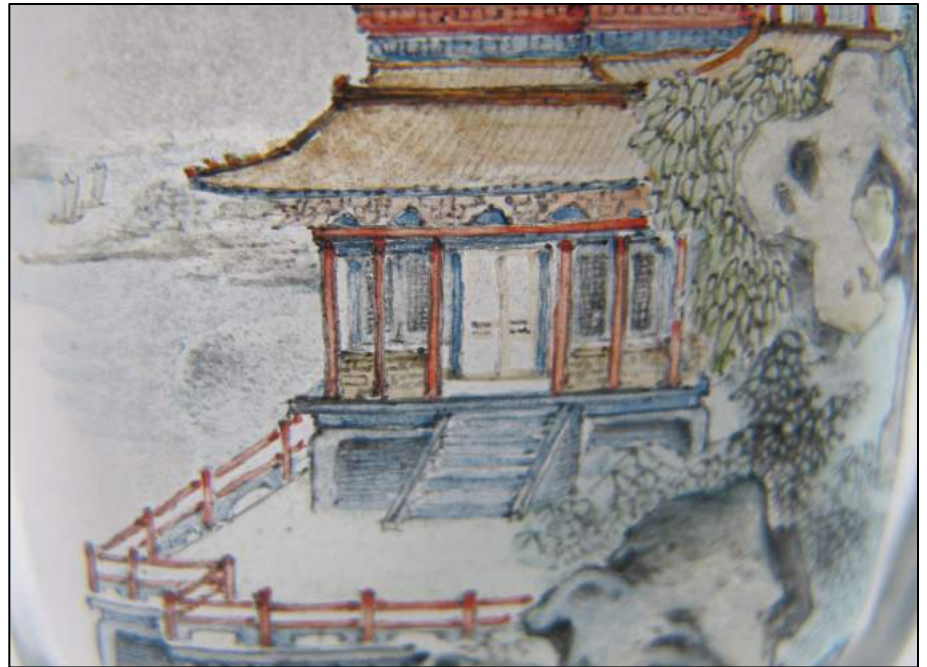
Bought in Paris, 1977



N° 9 - Chen Dongshun - A glass snuff bottle of flattened rectangular form, painted inside on each side with a riverscape, house on stilts, pavilion, mountains, rocks and trees. - An inscription, which reads: "pavilion in the mountain by the river".
Signed Chen Dongshun with his seal
H: 6,8 cm



N° 9 - Chen Dongshun was born in 1943. Native of Boshan, he started « inside painting art » in 1958 and is one of the most famous artists of the Lu School.
Ref: "Contemporary Schools of inside painting" by Peter A. Bentley -
ICSBS Journal - Spring 2015 - P: 18

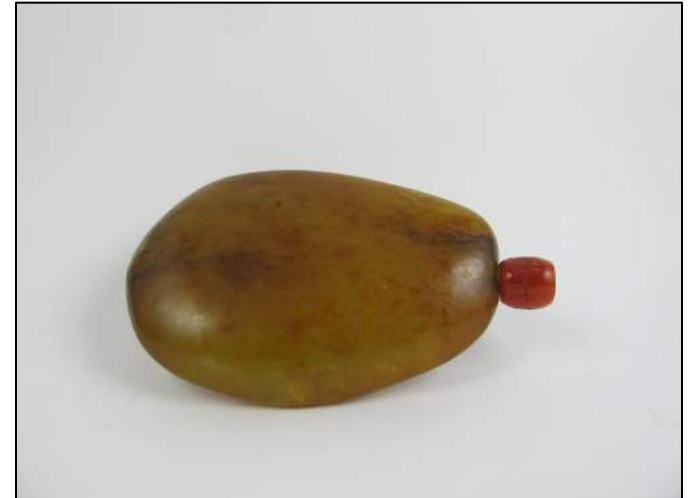


N° 10 - A very flat nephrite snuff bottle of pebble material with a narrow mouth and well hollowed, the natural surface of richly mottled russet colour.

1750-1820

H: 6 cm

Provenance: Old Dutch Collection



N° 11 - *A cylindrical snuff bottle painted in underglaze-blue and copper-red with a bearded fisherman wearing a reed coat holding a fish.*

1850 -1880

H: 6,8cm



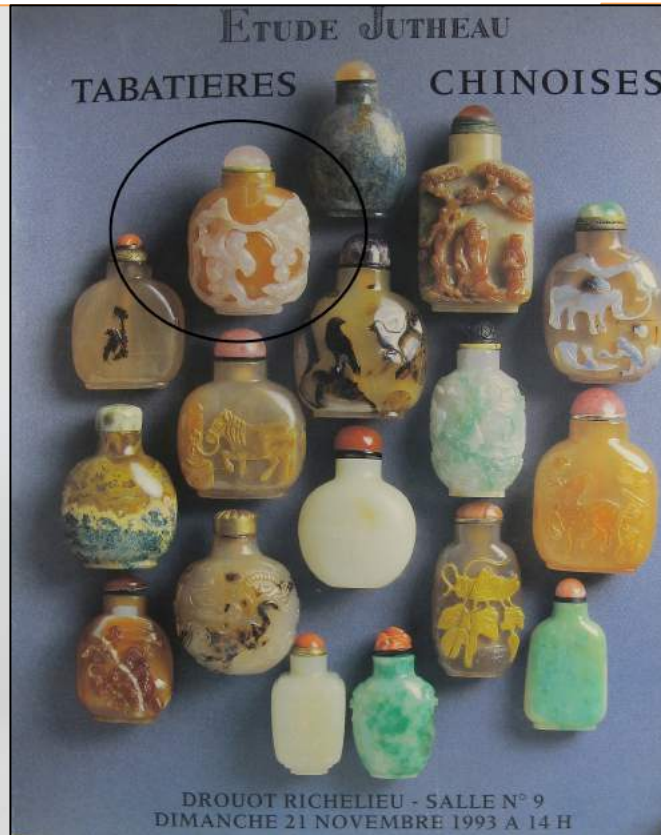
N° 12 - *A very unusual honey tone agate snuff bottle carved in a white vein with a continuous scene depicting a boy and three squirrels in grapevine.*

1800-1860

h : 6,1 cm



N° 12 - Provenance : *The White Orchid Collection*
Eude de Me Jutheau, Vente du 21/11/1993, n° 85.
Illustrated (front cover)



N° 13 - *An opaque yellow glass snuff bottle of globular form, carved in relief with a continuous scene depicting a flower basket with handles.*

1760-1820

h : 6,2 cm

Provenance : *The White Orchid Collection*

Vente Ader-Picard-Tajan, 22/05/89 - n° 78



N° 14 - An ovoid jar-shaped porcelain snuff bottle painted in underglaze-blue with a continuous scene depicting the Eight Auspicious Symbols of Buddhism and flowers in iron-red enamels.

1840-1880

H: 7,3 cm



N° 15 - *A small white nephrite snuff bottle of flattened rectangular form carved with a panel on each side. Flat foot.*

1750-1820

H: 4,6 cm

Provenance: Old Dutch Collection



N° 16 - A realgar glass snuff bottle of ovoid shape, the glass of varying reddish orange tones and with green and yellow striations in imitation of realgar.

1780-1850

h : 5 cm



N° 17 - A Glass snuff bottle of flattened rectangular form, painted inside with a riverscape, a scholar seated in a pavilion built near a cascade, the reverse with a crab beneath a large cabbage leaf, blooming chrysanthemums, three water chestnuts and two jujubes. Signed in draft script Yutian, with one seal of the artist "yutian".
Ht: 6,2 cm



Price list - US\$

N° 1: us\$ 1800

N° 2: us\$ 2000

N° 3: us\$ 2000

N° 4: us\$ 6000

N° 5: us\$ 6000

N° 6: us\$ 2300

N° 7: us\$ 2000

N° 8: us\$ 5800

N° 9: us\$ 2300

N° 10: us\$ 3000

N° 11: us\$ 1300

N° 12: us\$ 5400

N° 13: us\$ 6800

N° 14: us\$ 2500

N° 15: us\$ 3000

N° 16: us\$ 1800

N° 17: us\$ 2500

